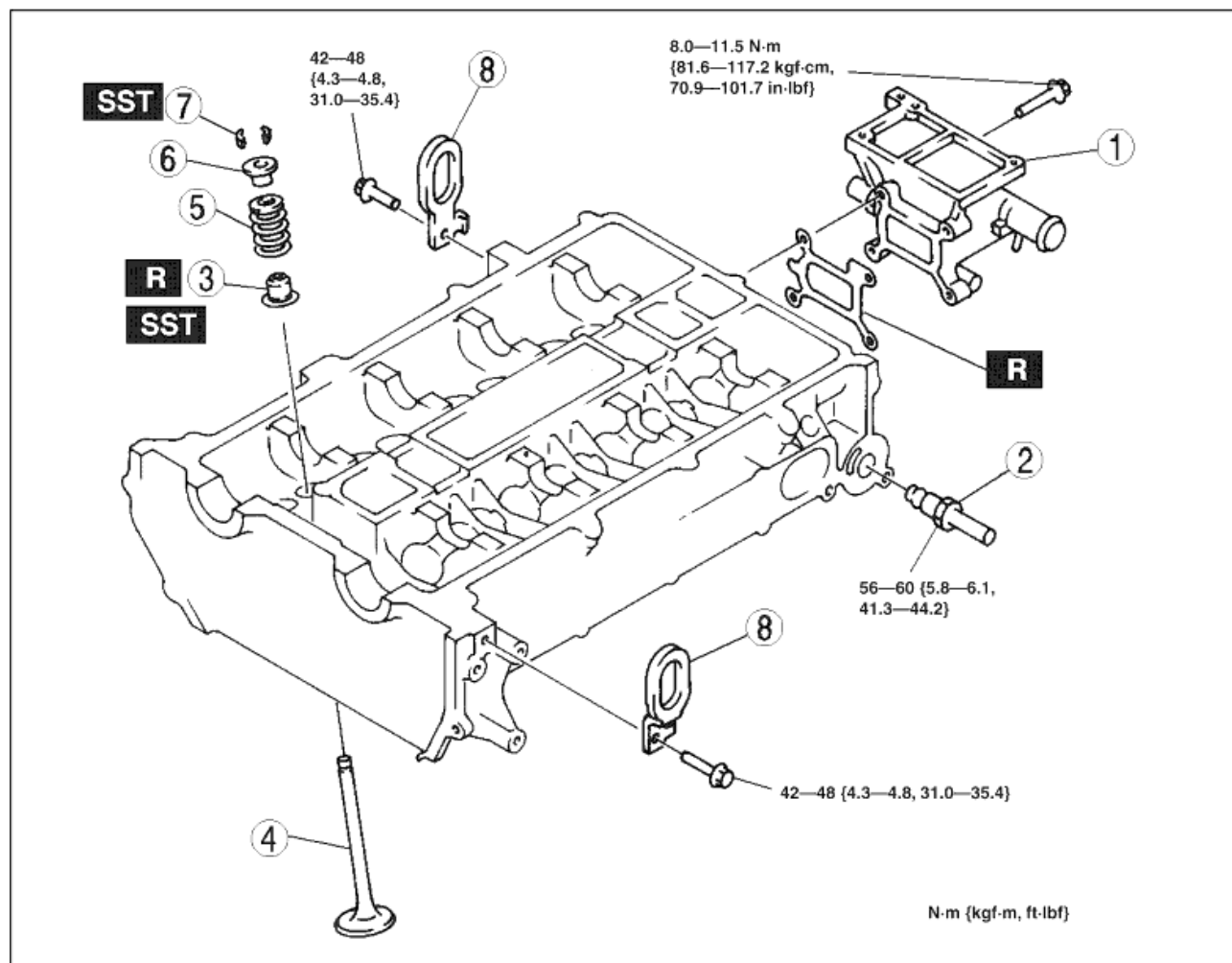


CYLINDER HEAD (I) ASSEMBLY

A6E242402000E11

1. Assemble in the order indicated in the table.



1	Water outlet case
2	EGR pipe
3	Valve seal (See Valve Seal Assembly Note)
4	Valve
5	Valve spring
6	Upper valve spring seat
7	Valve keeper (See Valve Keeper Assembly Note)
8	Engine hanger

Valve Seal Assembly Note

1. Press the valve seal onto the valve guide by hand.
2. Lightly tap the **SST** using a plastic hammer.

Valve Keeper Assembly Note

1. Install the valve keeper using the **SSTs**.

